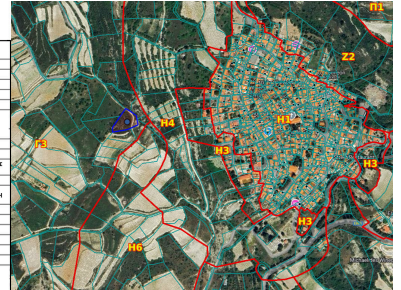


A wide-angle landscape photograph showing a dirt road winding through a dry, hilly area. The foreground is a steep, rocky slope with sparse, low-lying vegetation and some small trees. The middle ground features a dirt road that curves through the landscape, flanked by dry grass and scattered trees. In the background, rolling hills and mountains are visible under a clear blue sky. The overall scene depicts a rural, arid environment.



Τηλέφωνο: 162	
Όνομα/ονόματα:	ΚΟΛΛΙΑΝ
επώνυμο:	
ηλικία:	0
π. φύλο:	47/35 Δ
π. Εγγύρ:	0/19028
πρόσβαση:	ΒΑΡΥΤΑΝ
μειοψία:	2.342y2
αποστολή:	ΧΟΡΩΦΙ
(Ανταπόδοτος)	ΑΝΩΤΕΡΟ ΠΟΛΥΤΕΧΝΕΙΟ
αλ. ζώνης:	Γ3(100%)
εργασιακή	ΓΕΩΡΓΙΚΗ ΖΩΝΗ
ζώνη:	16%
άλλες:	16%
πρώτα:	2.
90%	8.3p
π.:	34.844797
π.:	32.856178



**€18,000**



For sale: A large field, located in the charming village of Koilani. This property offers a unique opportunity to own substantial land in a beautiful and peaceful area known for its rich history and natural scenery.

Koilani is tucked away among rolling hills and vineyards, famous for its traditional character and welcoming community. The village is surrounded by lush greenery and is well known for producing excellent local wines. The

**2342 m<sup>2</sup>**



 (+357) 99874080

